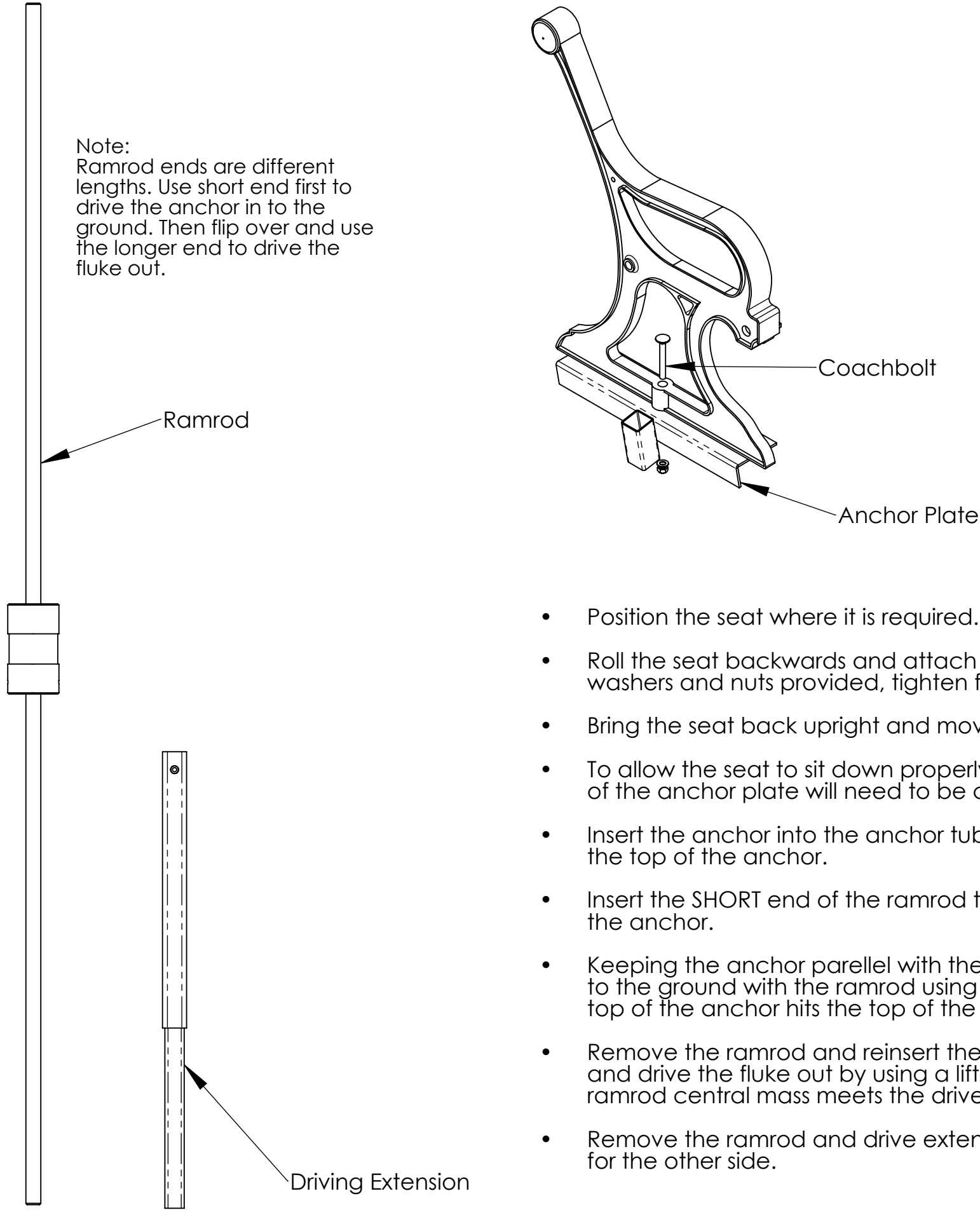
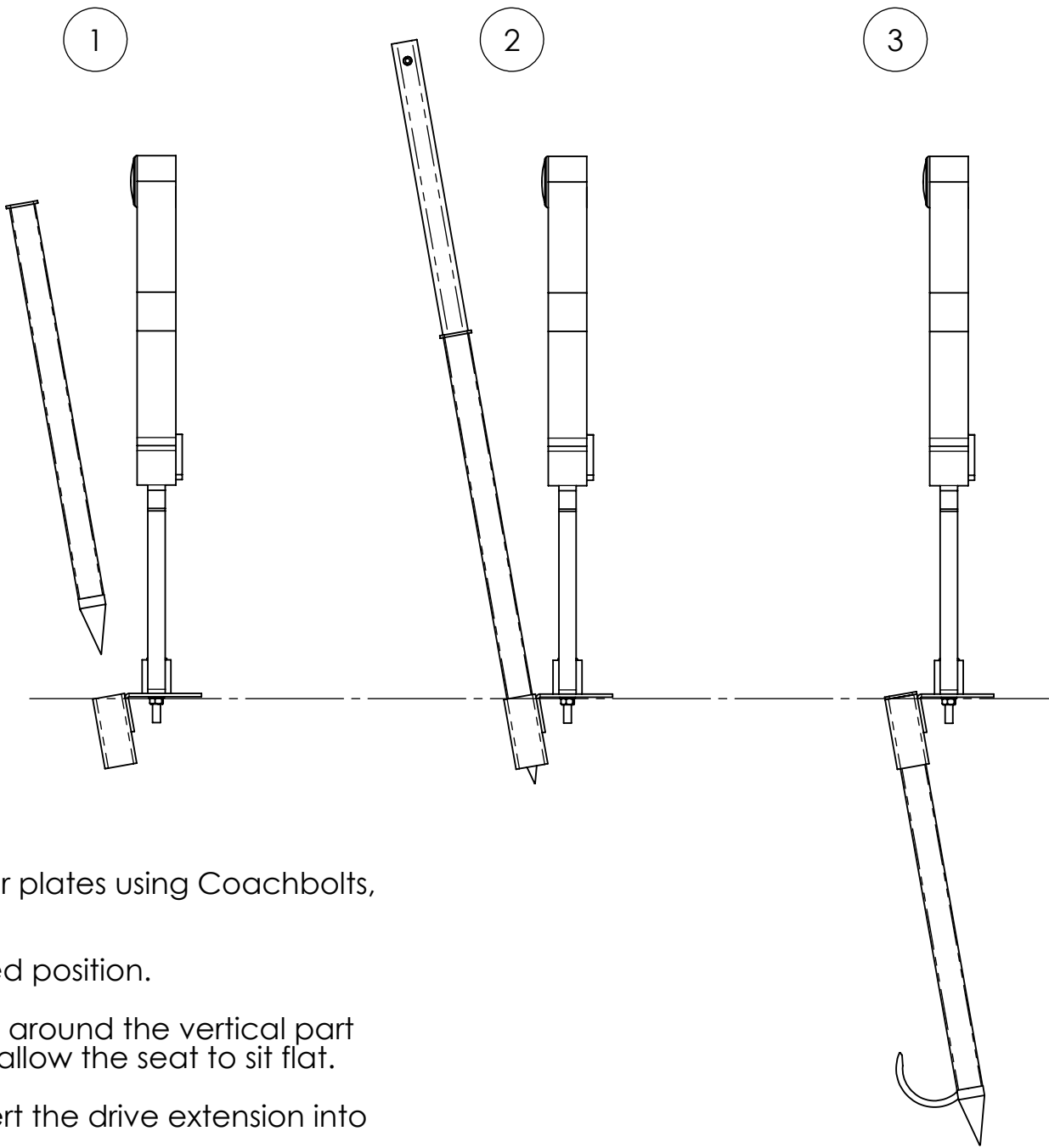


CHECK FOR BURIED SERVICES BEFORE INSTALLATION

Note:  
Ramrod ends are different  
lengths. Use short end first to  
drive the anchor in to the  
ground. Then flip over and use  
the longer end to drive the  
fluke out.



- Position the seat where it is required.
- Roll the seat backwards and attach the anchor plates using Coachbolts, washers and nuts provided, tighten fully.
- Bring the seat back upright and move to desired position.
- To allow the seat to sit down properly, the area around the vertical part of the anchor plate will need to be cleared to allow the seat to sit flat.
- Insert the anchor into the anchor tube and insert the drive extension into the top of the anchor.
- Insert the SHORT end of the ramrod through the drive extension and into the anchor.
- Keeping the anchor parallel with the sides of the anchor tube, drive it in to the ground with the ramrod using a lift-and-assisted-fall action until the top of the anchor hits the top of the base plate tube.
- Remove the ramrod and reinsert the long end in to the drive extension and drive the fluke out by using a lift-and-assisted-fall action until the ramrod central mass meets the drive extension.
- Remove the ramrod and drive extension and repeat process for the other side.



PROPRIETARY AND CONFIDENTIAL  
THE INFORMATION CONTAINED IN THIS  
DRAWING IS THE SOLE PROPERTY OF  
EARTH ANCHORS LIMITED. ANY  
REPRODUCTION IN PART OR AS A WHOLE  
WITHOUT THE WRITTEN PERMISSION OF  
EARTH ANCHORS LIMITED IS PROHIBITED.

| REVISION  |              |
|---|--------------|
| Earth Anchors Ltd   |              |
| TITLE:<br>Brighton seat installation -<br>Rootfast anchored |              |
| Doc 448   | A3           |
| SCALE:  | SHEET 1 OF 1 |