

Moulded Seat Assembly Instructions

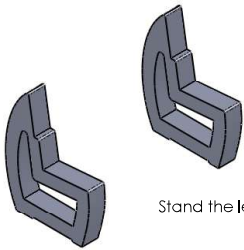
Parts Supplied

- a) 2 x Leg frames
- b) 3 x Seat slats with 4 pre drilled holes
(outer slat has off-set holes)
- c) 2 x Back slats with 4 pre-drilled holes
(top slat has off-set holes)
- d) 16 x 90mm Long screws
- e) 4 x 70mm Long screws

Tools Required

- Power drill with Phillips screw driver bit (type 2)
- Measuring tape
- Straight edge

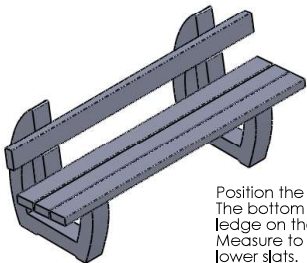
1



2 x Leg Frames

Stand the leg frames upright on a flat surface

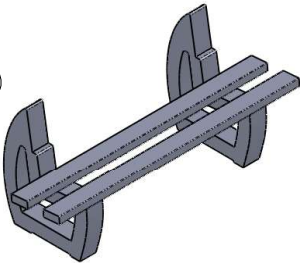
3



1 x Back slats
4 x 90mm screws

Position the lower slat on the back.
The bottom slat should sit approx 5mm higher than the ledge on the back support.
Measure to ensure it overhangs the frame equally to the lower slats.
Fix with 90mm screws.

2



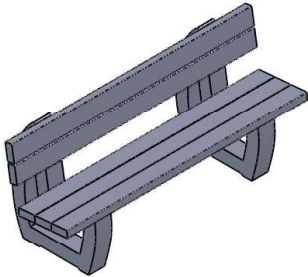
3 x Seat slats
10 x 90mm screws
2 x 70mm screws

Position the three lower seat slats on the seat. Ensure that the front edge slat has offset holes and that these are orientated so that there closest to the back edge. Line up the screw holes with the centre of the frame. Square the ends with a straight edge and measure to ensure the slats overhang the frame equally either side. Ensure there is a equal spacing between the slats (can vary between 0-8mm spacing)

Fix the slats in place using 90mm apart from on the front edge with requires 70mm screws to prevent them protruding through the frame.

Important: If anchored, do not fit the central slat yet. Leave till last and once in position - see EA101 anchor instructions.

4



1 x Back slats
2 x 90mm screws
2 x 70mm screws

Position the top slat with offset holes. Should be orientated so that the holes are closest to the lower slat. Ensure there is equal spacing between the slats. Fix using 2 x 90mm screws and 2 x 70mm screws for the top holes