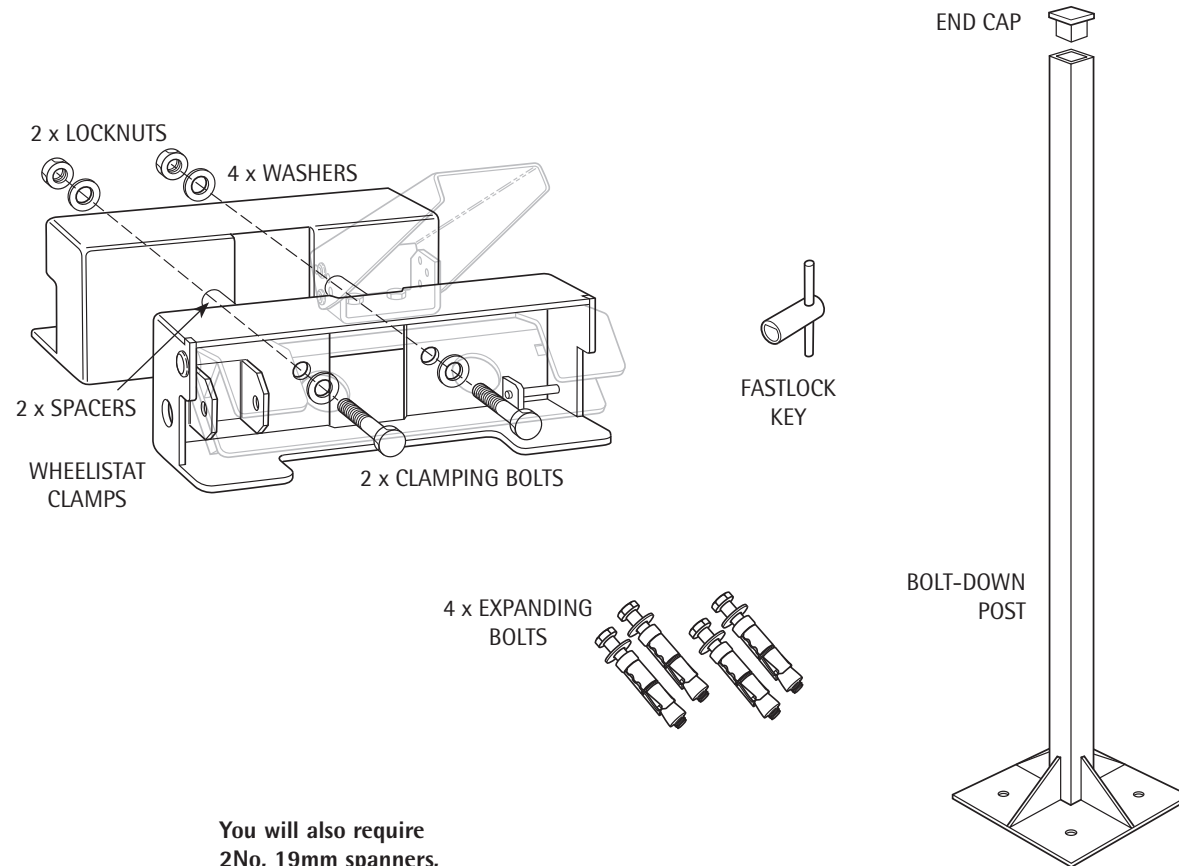


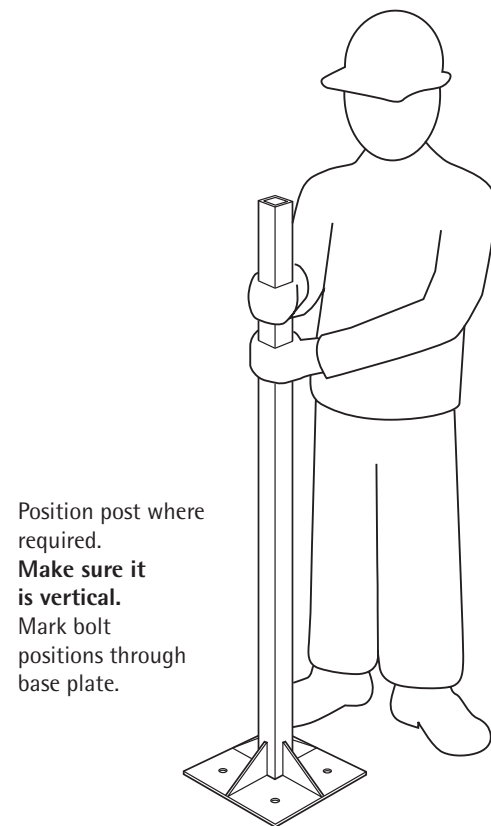
# INSTALLATION INSTRUCTIONS DUAL WHEELISTAT (WITH BOLT-DOWN POST)

DOC REF: 504 ISSUE 01

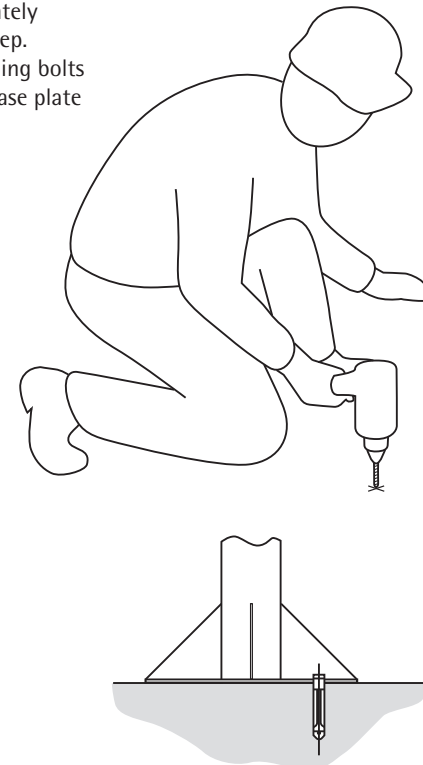


You will also require  
2No, 19mm spanners,  
and 20mm masonry drill.

## 1 INSTALLING THE POST



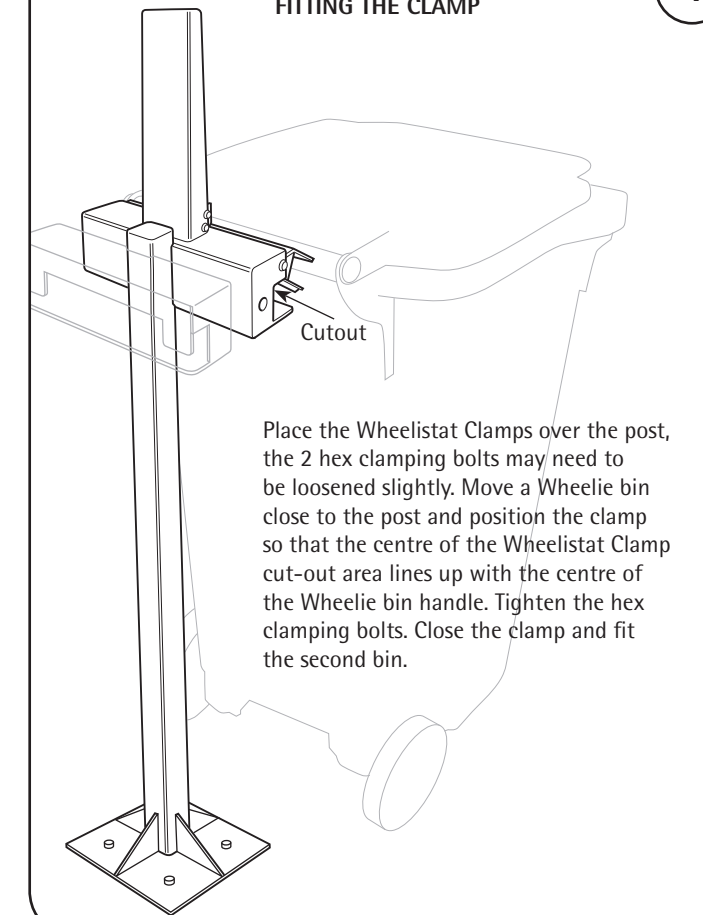
2  
Move post aside and drill 4 x 20mm holes, approximately 110mm deep. Fit expanding bolts through base plate into holes.



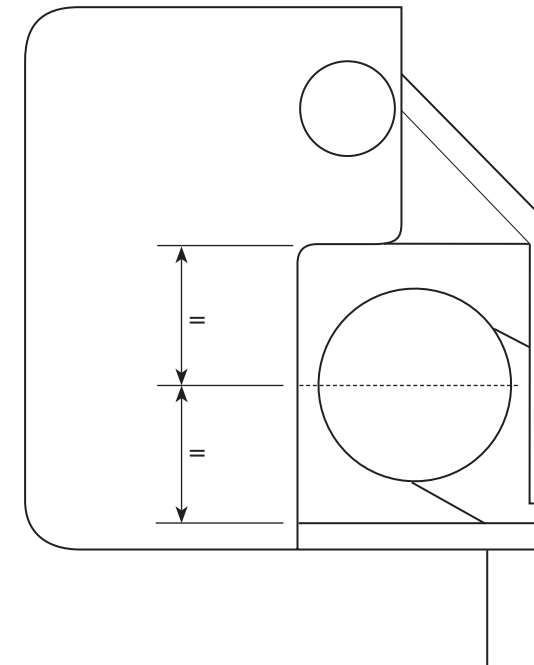
3  
When all the bolts are positioned, fully tighten them.



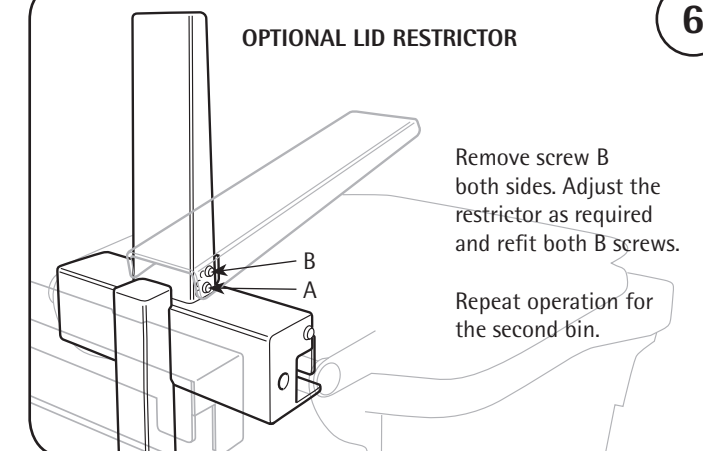
## 4 FITTING THE CLAMP



5  
Relative position of clamped handle after installation.



## 6 OPTIONAL LID RESTRICTOR



7  
Once the Wheelistat is closed use the Fastlock key to unlock the mechanism and release each of the bins.

