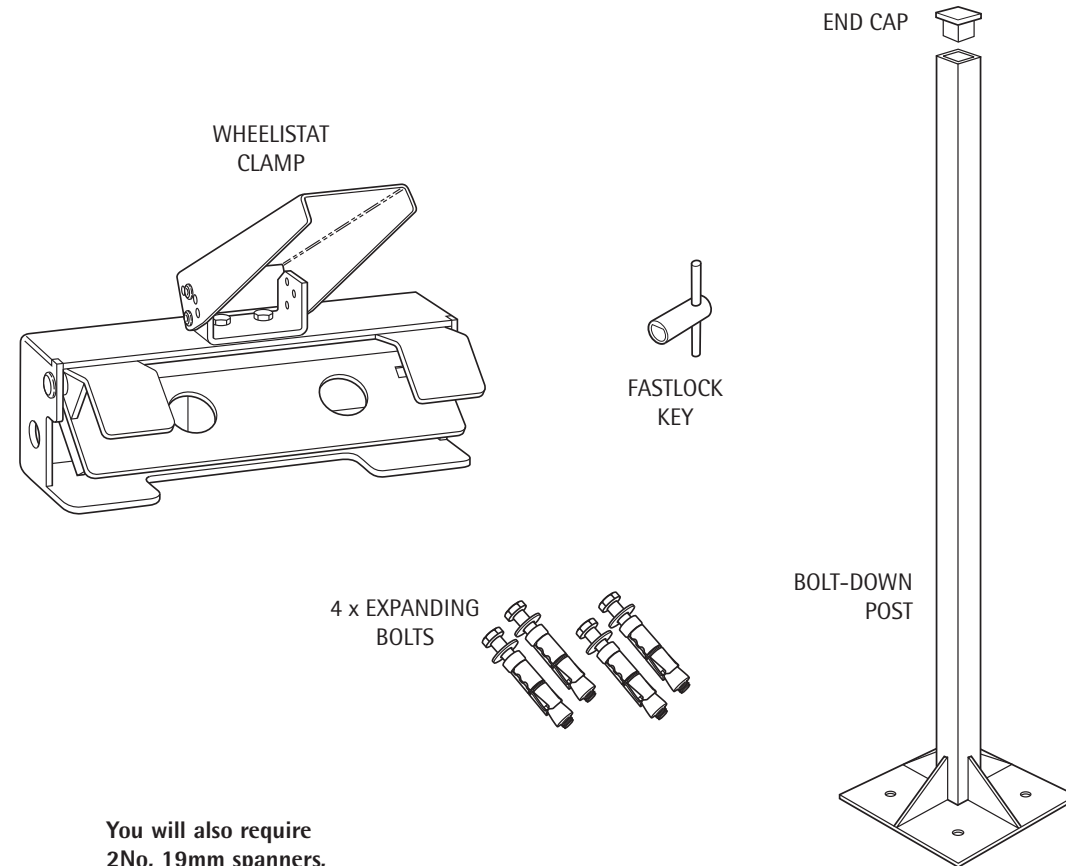


INSTALLATION INSTRUCTIONS WHEELISTAT (WITH BOLT-DOWN POST)

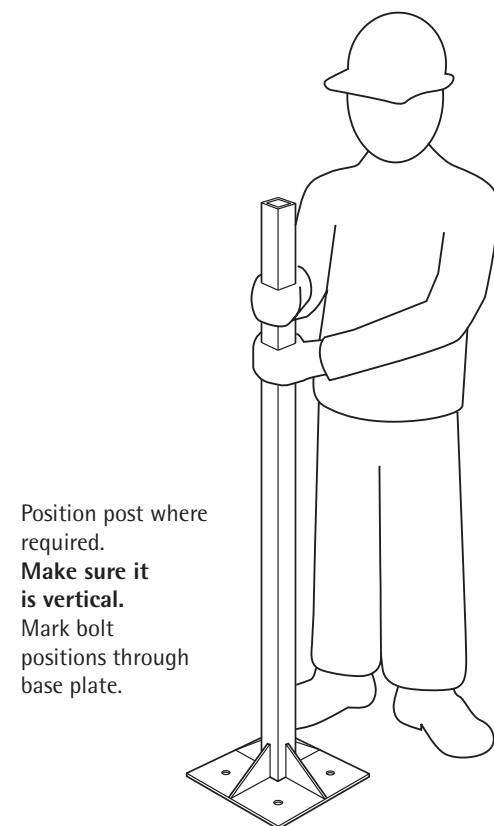
DOC REF: 504 ISSUE 01



You will also require
2No, 19mm spanners,
and 20mm masonry drill.

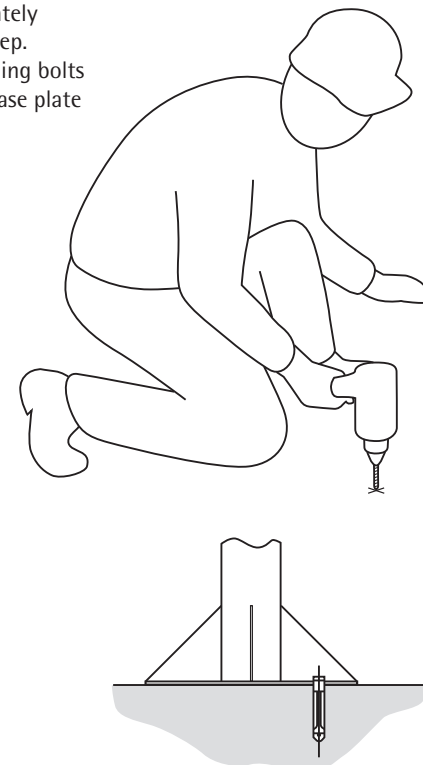
INSTALLING THE POST

1



Move post aside and drill 4 x 20mm holes, approximately 110mm deep. Fit expanding bolts through base plate into holes.

2



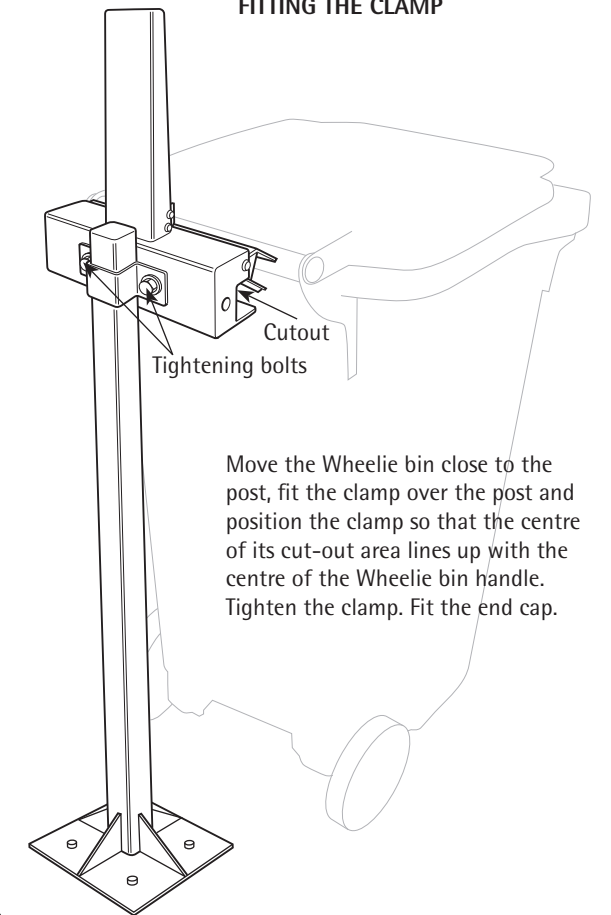
When all the bolts are positioned, fully tighten them.

3



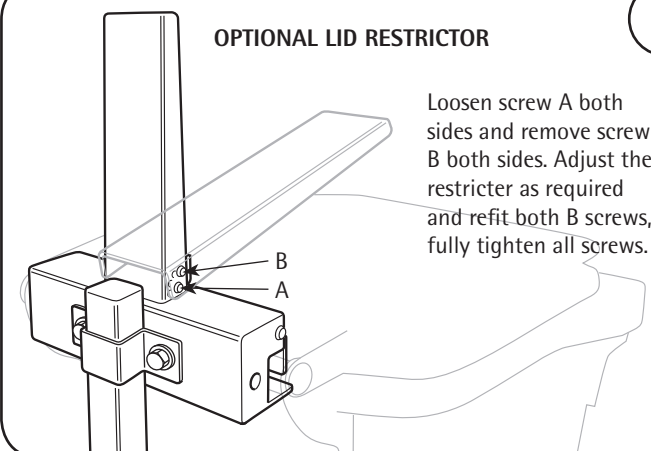
FITTING THE CLAMP

4



OPTIONAL LID RESTRICTOR

5



Once the Wheelistat is closed use the Fastlock key to unlock the mechanism and release the bin.

6

