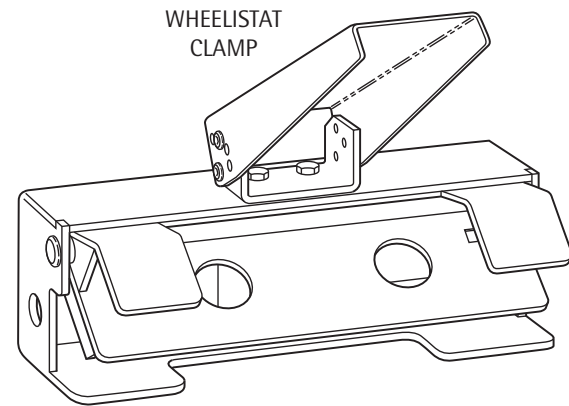


# INSTALLATION INSTRUCTIONS WHEELISTAT (WALL MOUNTED)

DOC REF: 505 ISSUE 01

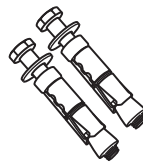


WHEELISTAT  
CLAMP



FASTLOCK  
KEY

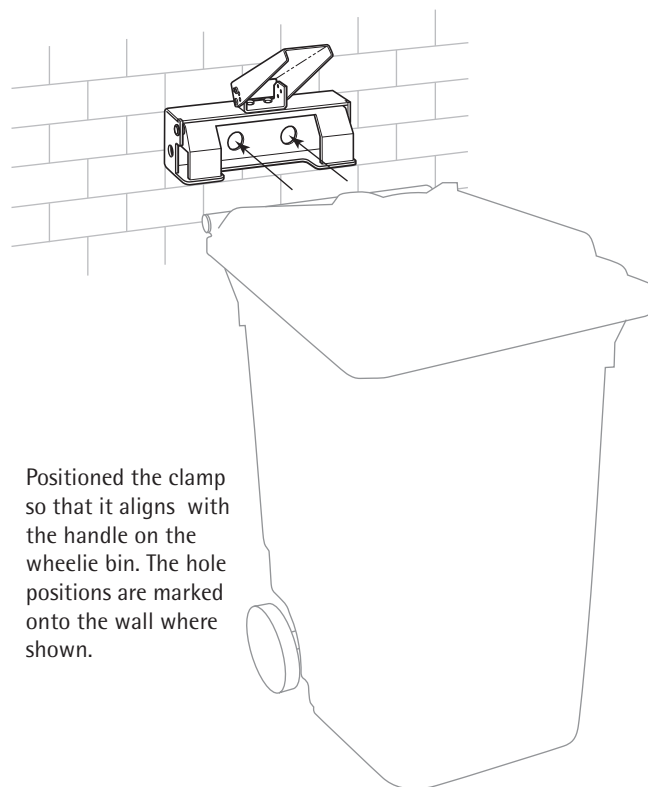
2 x EXPANDING  
BOLTS



You will also require  
1No, 19mm spanners,  
and 20mm masonry drill.

## INSTALLING THE CLAMP

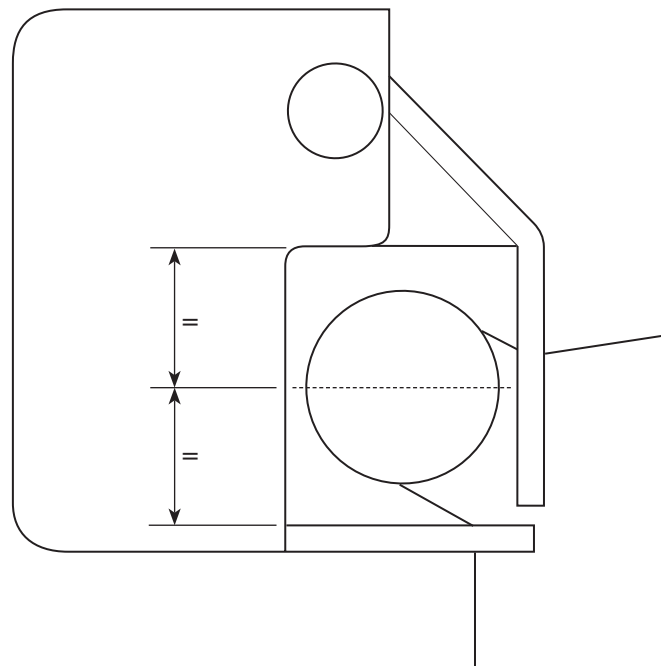
1



Positioned the clamp  
so that it aligns with  
the handle on the  
wheelie bin. The hole  
positions are marked  
onto the wall where  
shown.

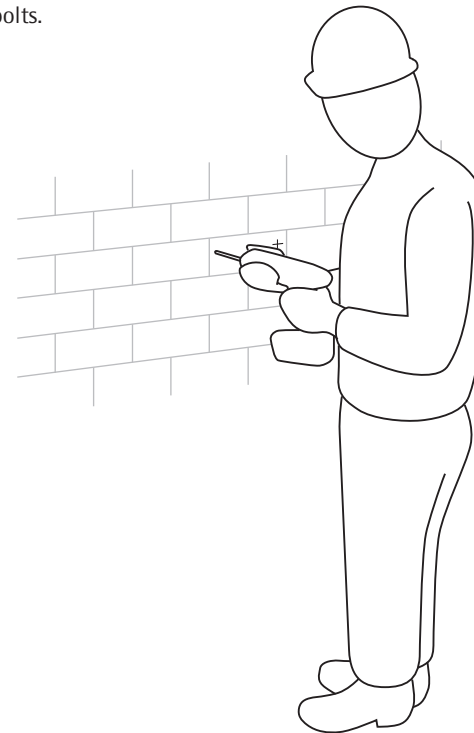
Relative position of clamped  
handle after instalation.

2



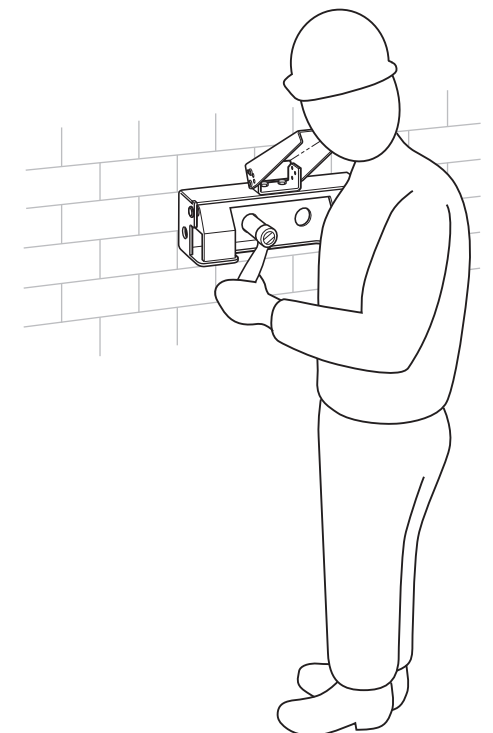
Drill 2 x 20mm holes  
approximately 110mm  
deep and fix the clamp  
using the expanding  
bolts.

3



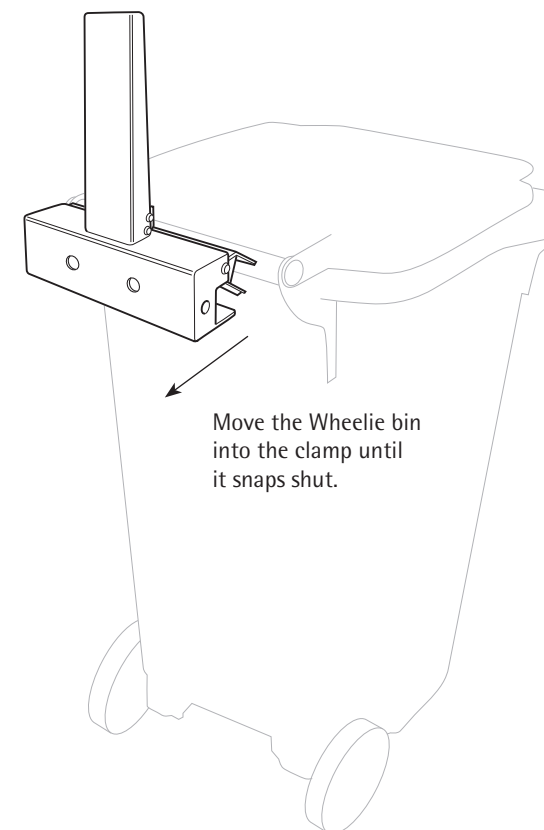
When all the bolts  
are positioned, fully  
tighten them.

4



## FITTING THE CLAMP

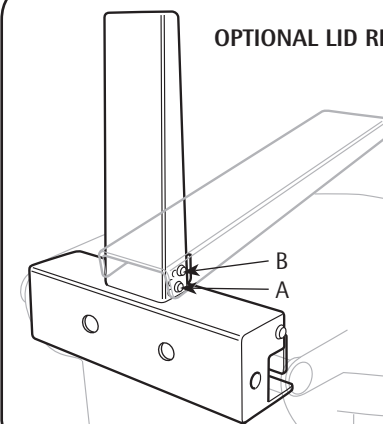
5



Move the Wheelie bin  
into the clamp until  
it snaps shut.

## OPTIONAL LID RESTRICTOR

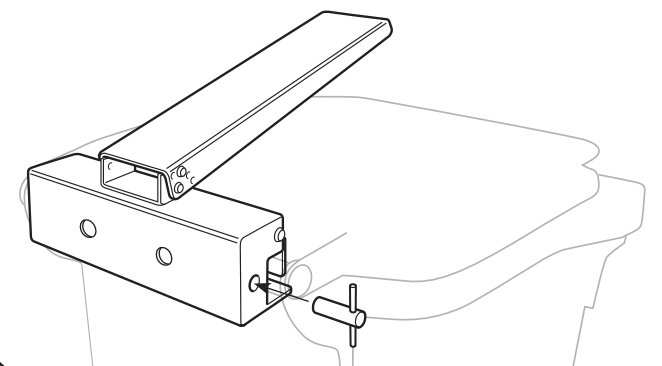
6



Loosen screw A both  
sides and remove screw  
B both sides. Adjust the  
restrictor as required  
and refit both B screws,  
fully tighten all screws.

Once the Wheelistat is closed use the Fastlock key  
to unlock the mechanism and release the bin.

7



Earth Anchors Ltd  
15 Campbell Road, Croydon, Surrey CR0 2SQ, United Kingdom.  
Tel: 020 8684 9601 Fax: 020 8684 2230  
www.earth-anchors.com